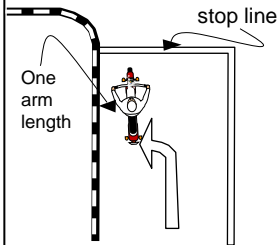


# SAFETY CHECKS & TARGET STOPPING

Requirement: Able to stop, move off and make a left/right turns at junction safely and smoothly.

## Stopping at junctions

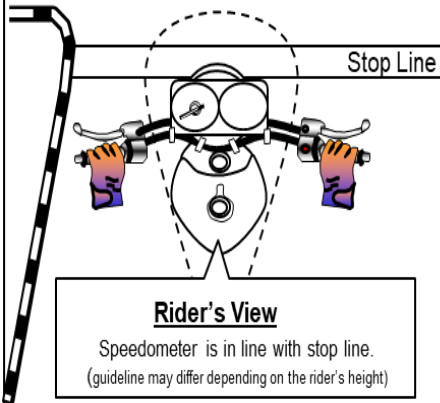
### Procedure for stopping at a junction



1. Slow down and stop behind the stop line.
2. Engage to 1<sup>st</sup> gear before stopping
3. Complete stop, left foot down
4. Stop away from the kerb about 1 arm length

### Stop line at junction

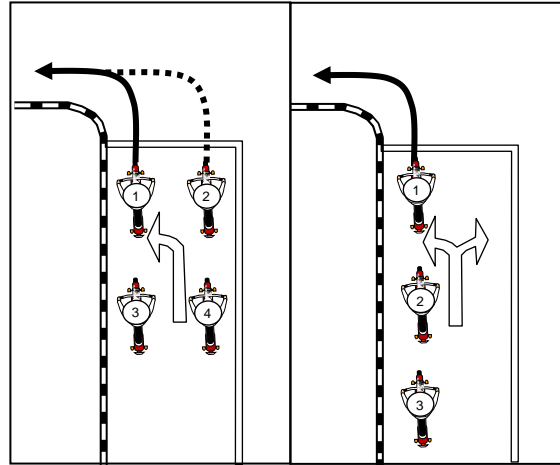
Motorcycle must stop behind the stop line



#### Rider's View

Speedometer is in line with stop line.  
(guideline may differ depending on the rider's height)

## Left Turn



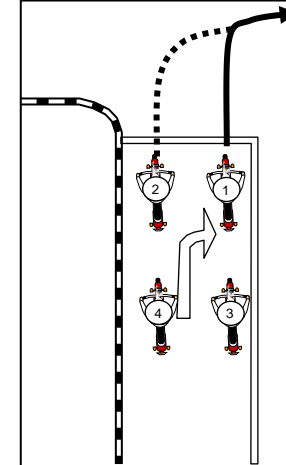
Rider (1) & (2) check blind spot **left** before moving off and turn left.

Rider (3) & (4) check blind spot **right** before moving forward to the stop line

Rider (1) check blind spot **left** before moving off and turn left.

Rider (2) & (3) check blind spot **right** before moving forward to the stop line

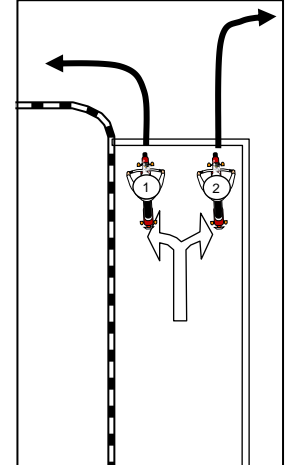
## Right Turn



Rider (1) & (2) check blind spot **right** before moving off and turn right.

Rider (3) & (4) check blind spot **right** before moving forward to the stop line

## Left / Right Turn

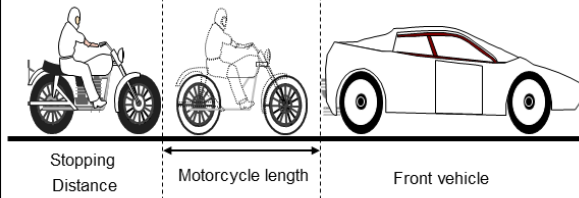


Rider (1) check blind spot **left** before moving off and turn **left**.

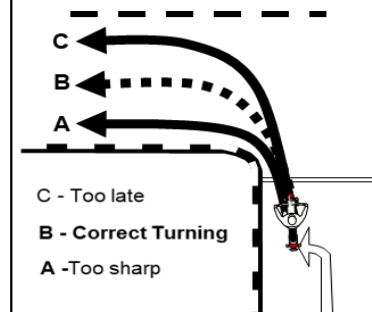
Rider (2) check blind spot **right** before moving off and turn **right**

### Stopping behind a car

Give an allowance about a motorcycle length from the front vehicle.



### Turning left



C - Too late

B - Correct Turning

A - Too sharp

Look out for traffic by turning your head to the right and left for safety at junctions and side roads.

### Check your Blind Spot



Right Blind Spot Left Blind Spot

Look over your shoulder